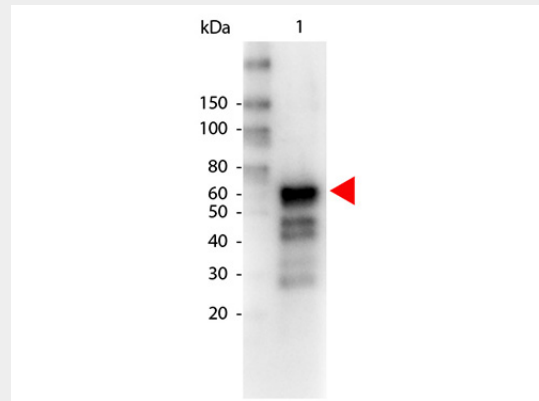


**Anti-Monkey IgA (alpha chain) (Biotin Conjugated) Secondary Antibody**  
Goat Polyclonal, Biotin  
Catalog # ASR2543

**Specification**

**Anti-Monkey IgA (alpha chain) (Biotin Conjugated) Secondary Antibody - Product Information**

Description	<b>Anti-MONKEY IgA (alpha chain) (GOAT) Antibody Biotin Conjugated Goat</b>
Host	<b>Goat</b>
Conjugate	<b>Biotin</b>
Target Species	<b>Monkey</b>
Clonality	<b>Polyclonal</b>
Application	<b>,1,10,15,</b>
Application Note	<b>ELISA</b> <b>1:100,000;Western Blot 1:2,000-1:10,000;Immunochemistry 1:1,000-1:5,000</b>
Physical State	<b>Lyophilized</b>
Host Isotype	<b>IgG</b>
Target Isotype	<b>IgA</b>
Buffer	<b>0.02 M Potassium Phosphate, 0.15 M Sodium Chloride, pH 7.2</b>
Immunogen	<b>Anti-Monkey IgA alpha heavy chain was produced by repeated immunization with Monkey IgA alpha heavy chain in goat.</b>
Reconstitution Volume	<b>1.0 mL</b>
Reconstitution Buffer	<b>Restore with deionized water (or equivalent)</b>
Stabilizer	<b>10 mg/mL Bovine Serum Albumin (BSA) - Immunoglobulin and Protease free</b>
Preservative	<b>0.01% (w/v) Sodium Azide</b>



Western Blot of Biotin conjugated Goat anti-MONKEY IgA alpha antibody. Lane 1: Human IgA. Lane 2: none. Load: 50 ng per lane. Primary antibody: Biotin Monkey IgA alpha antibody at 1:1,000 for overnight at 4°C. Secondary antibody: HRP Streptavidin secondary antibody at 1:40,000 for 30 min at RT. Block: MB-070 for 30 min at RT. Predicted/Observed size: 60 kDa for Monkey IgA. Other band(s): none.

Product	Gt-a-Monkey IgG	Gt-a-Monkey IgA	Gt-a-Monkey IgM
Rhesus Serum	+	+	+
Baboon Serum	+	+	+
Cynomolgus Serum	+	+	+
Rhesus IgG	+		
Human IgA		+	
Human IgM			+

This table displays additional reactivity among various species of serum and immunoglobulin. A (+) indicates antibody reactivity to the corresponding target.

**Anti-Monkey IgA (alpha chain) (Biotin Conjugated) Secondary Antibody - Additional Information**

**Shipping Condition**  
Ambient

**Purity**

**Anti-Monkey IgA (alpha chain) (Biotin Conjugated) Secondary Antibody - Background**

Anti-Monkey IgA alpha heavy chain antibody generated in goat detects specifically Monkey IgA alpha heavy chain. This secondary antibody anti-Monkey is ideal for investigators who

This product was prepared from monospecific antiserum by immunoaffinity chromatography using Monkey IgA coupled to agarose beads followed by solid phase adsorption(s) to remove any unwanted reactivities. Assay by immunoelectrophoresis resulted in a single precipitin arc against anti-Biotin and anti-Goat Serum. Specificity was confirmed by ELISA at less than 5% cross reactivity to IgM or IgG.

#### **Storage Condition**

Store vial at 4° C prior to restoration. For extended storage aliquot contents and freeze at -20° C or below. Avoid cycles of freezing and thawing. Centrifuge product if not completely clear after standing at room temperature. This product is stable for several weeks at 4° C as an undiluted liquid. Dilute only prior to immediate use.

#### **Precautions Note**

This product is for research use only and is not intended for therapeutic or diagnostic applications.

#### **Anti-Monkey IgA (alpha chain) (Biotin Conjugated) Secondary Antibody - Protein Information**

#### **Anti-Monkey IgA (alpha chain) (Biotin Conjugated) Secondary Antibody - Protocols**

Provided below are standard protocols that you may find useful for product applications.

- [Western Blot](#)
- [Blocking Peptides](#)
- [Dot Blot](#)
- [Immunohistochemistry](#)
- [Immunofluorescence](#)
- [Immunoprecipitation](#)
- [Flow Cytometry](#)
- [Cell Culture](#)

routinely perform ELISA, Sandwich ELISA, titration assays, western-blot, immunoprecipitation and more generally immunoassays.