

Anti-Affinity Purified RAT IgG (H&L)(GOAT) (Min X MOUSE Serum Proteins) Secondary Antibody
Goat Polyclonal, Unconjugated
Catalog # ASR3326

Specification

Anti-Affinity Purified RAT IgG (H&L)(GOAT) (Min X MOUSE Serum Proteins) Secondary Antibody - Product Information

Description	Anti-RAT IgG (H&L) (GOAT) Antibody (Min X Mouse Serum Proteins)
Host	Goat
Conjugate	Unconjugated
Target Species	Rat
Reactivity	Rat
Clonality	Polyclonal
Application	,1,10,15,
Application Note	ELISA 1:20,000-1:110,000;Western Blot 1:10,000-1:40,000;Immunochemistry 1:5,000-1:20,000
Physical State	Liquid (sterile filtered)
Host Isotype	IgG
Target Isotype	IgG (H&L)
Buffer	0.02 M Potassium Phosphate, 0.15 M Sodium Chloride, pH 7.2
Immunogen	Rat IgG whole molecule
Stabilizer	None
Preservative	0.01% (w/v) Sodium Azide

Anti-Affinity Purified RAT IgG (H&L)(GOAT) (Min X MOUSE Serum Proteins) Secondary Antibody - Additional Information

Shipping Condition

Wet Ice

Purity

This product was prepared from monospecific antiserum by immunoaffinity chromatography using Rat IgG coupled to agarose beads followed by solid phase adsorption(s) to remove any unwanted reactivities. Assay by immunoelectrophoresis resulted in a single precipitin arc against anti-Goat Serum, Rat IgG and Rat Serum. No reaction was observed against Mouse Serum Proteins. Specificity was confirmed by ELISA at less than 1% reactivity.

Storage Condition

Store vial at 4° C prior to opening. This product is stable for several weeks at 4° C as an undiluted liquid. Dilute only prior to immediate use. For extended storage, aliquot contents and freeze at -20° C or below. Avoid cycles of freezing and thawing.

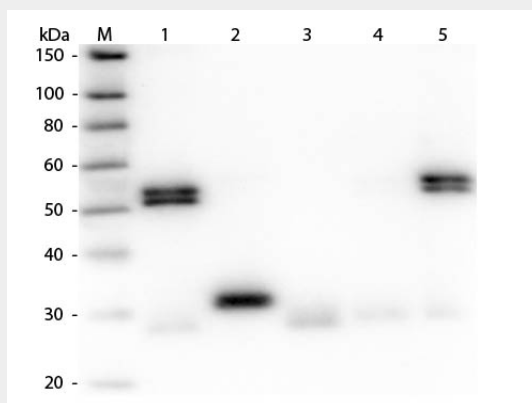
Precautions Note

This product is for research use only and is not intended for therapeutic or diagnostic applications.

Anti-Affinity Purified RAT IgG (H&L)(GOAT) (Min X MOUSE Serum Proteins) Secondary Antibody - Protein Information**Anti-Affinity Purified RAT IgG (H&L)(GOAT) (Min X MOUSE Serum Proteins) Secondary Antibody - Protocols**

Provided below are standard protocols that you may find useful for product applications.

- [Western Blot](#)
- [Blocking Peptides](#)
- [Dot Blot](#)
- [Immunohistochemistry](#)
- [Immunofluorescence](#)
- [Immunoprecipitation](#)
- [Flow Cytometry](#)
- [Cell Culture](#)

Anti-Affinity Purified RAT IgG (H&L)(GOAT) (Min X MOUSE Serum Proteins) Secondary Antibody - Images

Western Blot of Anti-Rat IgG (H&L) (GOAT) Antibody (Min X Human Serum Proteins) . Lane M: 3 μ l Molecular Ladder. Lane 1: Rat IgG whole molecule . Lane 2: Rat IgG F(c) Fragment . Lane 3: Rat IgG F(ab) Fragment . Lane 4: Rat IgM Whole Molecule . Lane 5: Rat Serum . All samples were reduced. Load: 50 ng per lane. Block: MB-070 for 30 min at RT. Primary Antibody: Anti-Rat IgG (H&L) (GOAT) Antibody (Min X Human Serum Proteins) 1:1,000 for 60 min at RT. Secondary Antibody: Anti-Goat IgG (DONKEY) Peroxidase Conjugated Antibody 1:40,000 in MB-070 for 30 min at RT. Predicted/Observed Size: 25 and 55 kDa for Rat IgG and Serum, 25 kDa for F(c) and F(ab), 78 and 25 kDa for IgM. Rat F(c) migrates slightly higher.