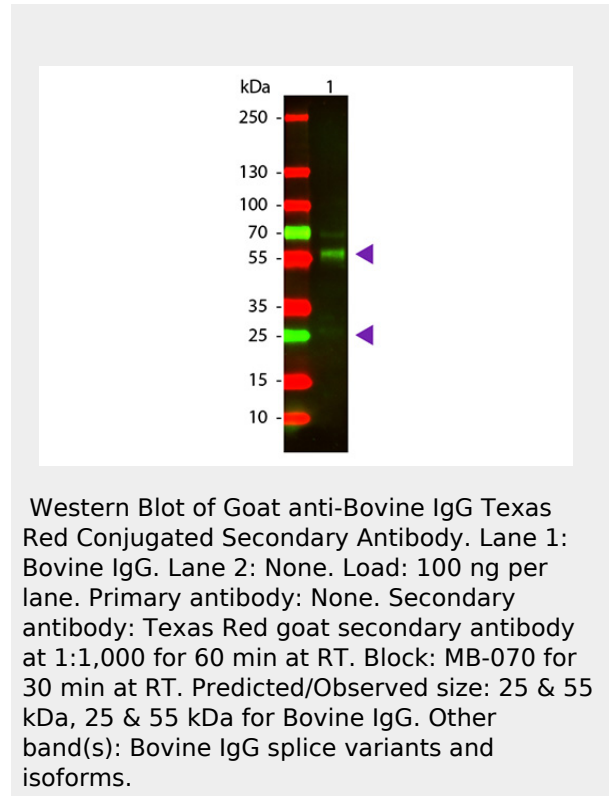


Anti-Bovine IgG (H&L) (Texas Red™ Conjugated) Secondary Antibody
 Goat Polyclonal, Texas Red®
 Catalog # ASR1544

Specification

Anti-Bovine IgG (H&L) (Texas Red™ Conjugated) Secondary Antibody - Product Information

Description	Anti-BOVINE IgG (H&L) (GOAT) Antibody Texas Red™ Conjugated Goat
Host	Texas Red®
Conjugate	5.0 moles Texas Red® per mole of IgG
FP Value	Bovine Polyclonal
Target Species	,3,4,
Clonality	FLISA 1:10,000-1:50,000;IF
Application	Microscopy 1:1,000-1:5,000;FlowCytometry
Application Note	1:500-1:2,500
Physical State	Lyophilized IgG
Host Isotype	IgG (H&L)
Target Isotype	0.02 M Potassium Phosphate, 0.15 M Sodium Chloride, pH 7.2
Buffer	Bovine IgG whole molecule
Immunogen	1.0 mL
Reconstitution	Restore with deionized water (or equivalent)
Volume	10 mg/ml
Reconstitution Buffer	Polyethylene Glycol (PEG-8000)
Stabilizer	0.01% (w/v)
Preservative	Sodium Azide



Anti-Bovine IgG (H&L) (Texas Red™ Conjugated) Secondary Antibody - Background

This product is designed for immunofluorescence microscopy, fluorescence based plate assays (FLISA) and fluorescent western blotting. This product is also suitable for multiplex analysis, including multicolor imaging, utilizing various commercial platforms.

Anti-Bovine IgG (H&L) (Texas Red™ Conjugated) Secondary Antibody - Additional Information

Shipping Condition

Ambient

Purity

This product was prepared from monospecific antiserum by immunoaffinity chromatography using Bovine IgG coupled to agarose beads followed by solid phase adsorption(s) to remove any unwanted reactivities. Assay by

immuno-electrophoresis resulted in a single precipitin arc against anti-Goat Serum, Bovine IgG and Bovine Serum.

Storage Condition

Store vial at 4° C prior to restoration. For extended storage aliquot contents and freeze at -20° C or below. Avoid cycles of freezing and thawing. Centrifuge product if not completely clear after standing at room temperature. This product is stable for several weeks at 4° C as an undiluted liquid. Dilute only prior to immediate use.

Precautions Note

This product is for research use only and is not intended for therapeutic or diagnostic applications.

Anti-Bovine IgG (H&L) (Texas Red™ Conjugated) Secondary Antibody - Protein Information

Anti-Bovine IgG (H&L) (Texas Red™ Conjugated) Secondary Antibody - Protocols

Provided below are standard protocols that you may find useful for product applications.

- [Western Blot](#)
- [Blocking Peptides](#)
- [Dot Blot](#)
- [Immunohistochemistry](#)
- [Immunofluorescence](#)
- [Immunoprecipitation](#)
- [Flow Cytometry](#)
- [Cell Culture](#)