

Phospho-LC3C(S12) Antibody

Peptide Affinity Purified Rabbit Polyclonal Antibody (Pab)

Catalog # AP3301a

Specification

Phospho-LC3C(S12) Antibody - Product Information

Application	WB, DB,E
Primary Accession	O9H492
Other Accession	O6XVN8 , O91VR7 , O2HJ23 , O6NX90
Reactivity Predicted	Human Zebrafish, Bovine, Mouse, Rat
Host	Rabbit
Clonality	Polyclonal
Isotype	Rabbit Ig

Phospho-LC3C(S12) Antibody - Additional Information

Gene ID 84557

Other Names

Microtubule-associated proteins 1A/1B light chain 3A, Autophagy-related protein LC3 A, Autophagy-related ubiquitin-like modifier LC3 A, MAP1 light chain 3-like protein 1, MAP1A/MAP1B light chain 3 A, MAP1A/MAP1B LC3 A, Microtubule-associated protein 1 light chain 3 alpha, MAP1LC3A

Target/Specificity

This LC3C Antibody is generated from rabbits immunized with a KLH conjugated synthetic phosphopeptide corresponding to amino acid residues surrounding S12 of human LC3C.

Dilution

WB~~1:1000
DB~~1:500

Format

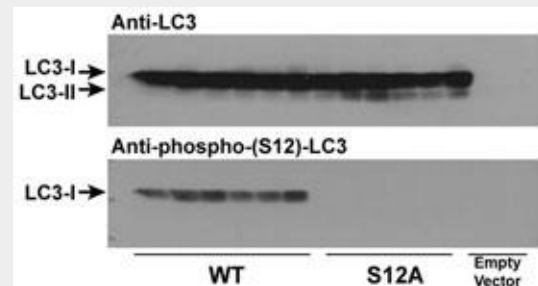
Purified polyclonal antibody supplied in PBS with 0.09% (W/V) sodium azide. This antibody is purified through a protein A column, followed by peptide affinity purification.

Storage

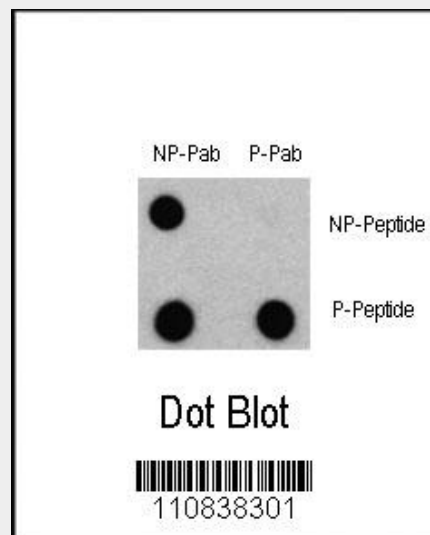
Maintain refrigerated at 2-8°C for up to 2 weeks. For long term storage store at -20°C in small aliquots to prevent freeze-thaw cycles.

Precautions

Phospho-LC3C(S12) Antibody is for research use only and not for use in diagnostic or therapeutic procedures.



Immunoblots of phosphorylated LC3 (phospho-LC3) in CHO cell culture. LC3 and LC3 S12A mutant vectors were transfected into CHO cells. The cell lysates were separated with SDS-PAGE and blotted with anti-phospho-LC3 S12 antibody. LC3 = microtubule-associated protein light chain-3; S12A = replacement of the amino acid position 12 serine of LC3 with alanine. WT = wildtype LC3-transfected cell lysates; S12A = LC3 S12A mutant-transfected cell lysates; Empty vector = vector with no LC3 gene. Molecular size: LC3-I = 16kDa, and LC3-II = 14 kDa



Dot blot analysis of Phospho-LC3 (APG8a) - S12 Antibody (Cat. #AP3301a) and Nonphospho-LC3 (APG8a) Antibody on nitrocellulose membrane. 50ng of Phospho-peptide or Non Phospho-peptide per dot were adsorbed. Antibody working concentrations are 0.5ug per ml.

Phospho-LC3C(S12) Antibody - Protein Information

Name MAP1LC3A

Function

Ubiquitin-like modifier involved in formation of autophagosomal vacuoles (autophagosomes) (PubMed:20713600, PubMed:24290141). Whereas LC3s are involved in elongation of the phagophore membrane, the GABARAP/GATE-16 subfamily is essential for a later stage in autophagosome maturation (PubMed:20713600).

Cellular Location

Cytoplasm, cytoskeleton. Endomembrane system; Lipid-anchor. Cytoplasmic vesicle, autophagosome membrane; Lipid-anchor. Cytoplasmic vesicle, autophagosome Note=LC3-II binds to the autophagic membranes

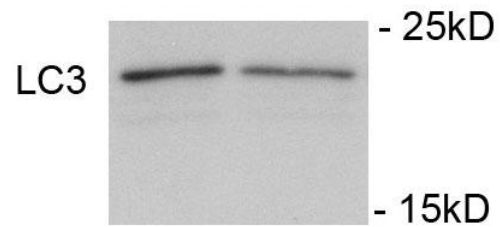
Tissue Location

Most abundant in heart, brain, liver, skeletal muscle and testis but absent in thymus and peripheral blood leukocytes.

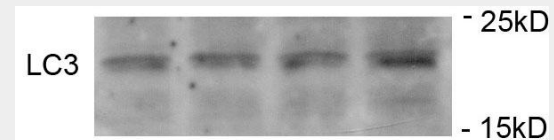
Phospho-LC3C(S12) Antibody - Protocols

Provided below are standard protocols that you may find useful for product applications.

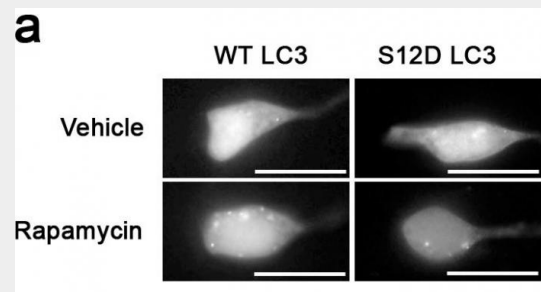
- [Western Blot](#)
- [Blocking Peptides](#)
- [Dot Blot](#)
- [Immunohistochemistry](#)
- [Immunofluorescence](#)
- [Immunoprecipitation](#)
- [Flow Cytometry](#)
- [Cell Culture](#)



Immunoblots of SH-SY5Y cells treated with rapamycin for 1 h was probed with AP3301a. The data shows that treatment with rapamycin showed no significant change in level of LC3.



Immunoblots of SH-SY5Y cells treated with MPP+ for 24h was probed with AP3301a. The data shows that treatment with MPP+ showed no significant change in level of LC3.



Something like SH-SY5Y cells expressing GFP-LC3-WT or-S12D treated with rapamycin or vehicle for 1h.

Phospho-LC3C(S12) Antibody - Background

MAP1A and MAP1B are microtubule-associated proteins which mediate the physical interactions between microtubules and components of the cytoskeleton. These proteins are involved in formation of autophagosomal vacuoles (autophagosomes). MAP1A and MAP1B each consist of a heavy chain subunit and multiple light chain subunits. MAP1LC3a is one of the light chain subunits and can associate with either MAP1A or MAP1B. The precursor molecule is cleaved by APG4B/ATG4B to form the cytosolic form, LC3-I. This is activated by APG7L/ATG7, transferred to ATG3 and conjugated to phospholipid to form the membrane-bound form, LC3-II. Macroautophagy is the major inducible pathway for the general turnover of cytoplasmic constituents in eukaryotic cells, it is also responsible for the degradation of active cytoplasmic enzymes and organelles during nutrient starvation. Macroautophagy involves the formation of double-membrane bound autophagosomes which enclose the cytoplasmic constituent targeted for degradation in a membrane bound structure, which then fuse with the lysosome (or vacuole) releasing a single-membrane bound autophagic bodies

which are then degraded within the lysosome (or vacuole).

Phospho-LC3C(S12) Antibody - References

Baehrecke EH. Nat Rev Mol Cell Biol. 6(6):505-10. (2005) Lum JJ, et al. Nat Rev Mol Cell Biol. 6(6):439-48. (2005) Greenberg JT. Dev Cell. 8(6):799-801. (2005) Levine B. Cell. 120(2):159-62. (2005) Shintani T and Klionsky DJ. Science. 306(5698):990-5. (2004) Tanida I., et al. Int. J. Biochem. Cell Biol. 36:2503-2518(2004) He H., et al. J. Biol. Chem. 278:29278-29287(2003) Tanida I., et al. J. Biol. Chem. 279:36268-36276(2004)

Phospho-LC3C(S12) Antibody - Citations

- [Assessment of Posttranslational Modifications of ATG proteins.](#)
- [The endothelial adrenomedullin-RAMP2 system regulates vascular integrity and suppresses tumour metastasis.](#)
- [Identification of a small molecule targeting annexin A7.](#)
- [MAPK15/ERK8 stimulates autophagy by interacting with LC3 and GABARAP proteins.](#)
- [Rab5 and class III phosphoinositide 3-kinase Vps34 are involved in hepatitis C virus NS4B-induced autophagy.](#)
- [Regulation of the autophagy protein LC3 by phosphorylation.](#)