

**Bi-Phospho-YES1(Y537)/Phospho-SRC(Y530) Antibody**  
Peptide Affinity Purified Rabbit Polyclonal Antibody (Pab)  
Catalog # AP3254a

**Specification**

**Bi-Phospho-YES1(Y537)/Phospho-SRC(Y530) Antibody - Product Information**

Application	DB, IHC-P,E
Primary Accession	<a href="#">P12931</a> , <a href="#">P07947</a>
Other Accession	<a href="#">O9WUD9</a> , <a href="#">P05480</a> , <a href="#">Q1JPZ3</a> , <a href="#">P00523</a> , <a href="#">P12931</a>
Reactivity Predicted	Human Chicken, Zebrafish, Mouse, Rat
Host	Rabbit
Clonality	Polyclonal
Isotype	Rabbit Ig

**Bi-Phospho-YES1(Y537)/Phospho-SRC(Y530) Antibody - Additional Information**

**Other Names**

Proto-oncogene tyrosine-protein kinase Src, Proto-oncogene c-Src, pp60c-src, p60-Src, SRC, SRC1

**Target/Specificity**

This SRC Antibody is generated from rabbits immunized with a KLH conjugated synthetic phosphopeptide corresponding to amino acid residues surrounding Y530 of human SRC.

**Dilution**

DB~1:500  
IHC-P~1:50~100

**Format**

Purified polyclonal antibody supplied in PBS with 0.09% (W/V) sodium azide. This antibody is purified through a protein A column, followed by peptide affinity purification.

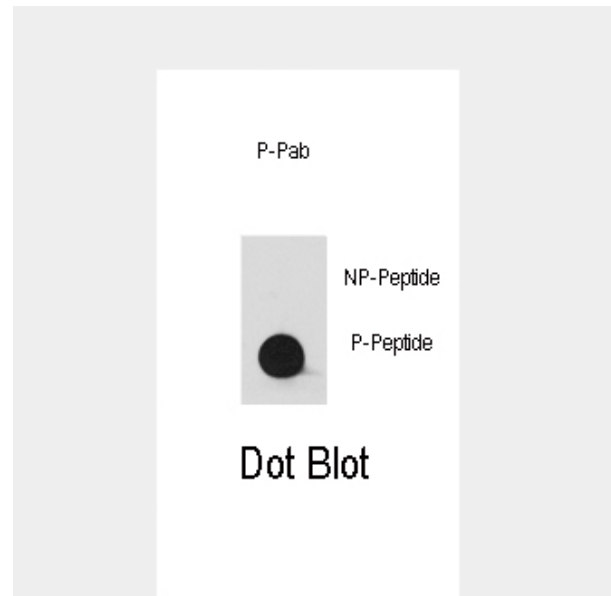
**Storage**

Maintain refrigerated at 2-8°C for up to 2 weeks. For long term storage store at -20°C in small aliquots to prevent freeze-thaw cycles.

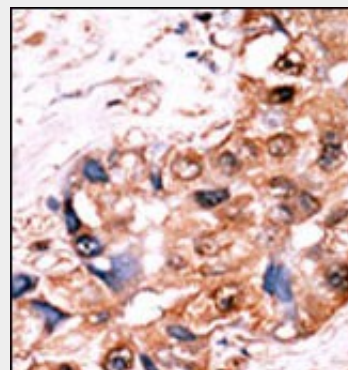
**Precautions**

Bi-Phospho-YES1(Y537)/Phospho-SRC(Y530) Antibody is for research use only and not for use in diagnostic or therapeutic procedures.

**Bi-Phospho-YES1(Y537)/Phospho-SRC(Y530) Antibody - Protein Information**



Dot blot analysis of anti-Phospho-YES1-Y537/Phospho-SRC-Y530 Antibody (Cat.#AP3254a) on nitrocellulose membrane. 50ng of Phospho-peptide or Non Phospho-peptide per dot were adsorbed. Antibody working concentrations are 0.5ug per ml.



Formalin-fixed and paraffin-embedded human cancer tissue reacted with the primary antibody, which was peroxidase-conjugated to the secondary antibody, followed by AEC staining. This data demonstrates the use of this antibody for immunohistochemistry; clinical relevance has not been evaluated. BC = breast carcinoma; HC = hepatocarcinoma

**Bi-Phospho-YES1(Y537)/Phospho-SRC(Y530) Antibody - Background**

## **Bi-Phospho-YES1(Y537)/Phospho-SRC(Y530) Antibody - Protocols**

Provided below are standard protocols that you may find useful for product applications.

- [Western Blot](#)
- [Blocking Peptides](#)
- [Dot Blot](#)
- [Immunohistochemistry](#)
- [Immunofluorescence](#)
- [Immunoprecipitation](#)
- [Flow Cytometry](#)
- [Cell Culture](#)

## **Bi-Phospho-YES1(Y537)/Phospho-SRC(Y530) Antibody - Citations**

- [Targeting the LOX/hypoxia axis reverses many of the features that make pancreatic cancer deadly: inhibition of LOX abrogates metastasis and enhances drug efficacy.](#)
- [Phosphorylation of collapsin response mediator protein 2 on Tyr-479 regulates CXCL12-induced T lymphocyte migration.](#)

This protein has tyrosine kinase activity and belongs to the src family of proteins. The YES1 gene is the cellular homolog of the Yamaguchi sarcoma virus oncogene.

## **Bi-Phospho-YES1(Y537)/Phospho-SRC(Y530) Antibody - References**

Anneren, C., et al., J. Biol. Chem. 279(30):31590-31598 (2004).  
Reinehr, R., et al., J. Biol. Chem. 279(23):23977-23987 (2004).  
Leclerc, P., et al., Biol. Reprod. 67(1):301-307 (2002).  
Oh, H.S., et al., J. Biol. Chem. 277(39):36489-36498 (2002).  
Silverman, G.A., et al., Genomics 15(2):442-445 (1993).