

(DANRE) ba1 Antibody (Center)
Purified Rabbit Polyclonal Antibody (Pab)
Catalog # AP20955a

Specification

(DANRE) ba1 Antibody (Center) - Product Information

Application	WB,E
Primary Accession	Q90486
Reactivity	Zebrafish
Host	Rabbit
Clonality	Polyclonal
Isotype	Rabbit IgG
Antigen Region	93-126

(DANRE) ba1 Antibody (Center) - Additional Information

Gene ID 30216;504174

Other Names

Hemoglobin subunit beta-1, Beta-1-globin, Beta-A1-globin, Hemoglobin beta-1 chain, ba1

Target/Specificity

This (DANRE) ba1 antibody is generated from a rabbit immunized with a KLH conjugated synthetic peptide between 93-126 amino acids from the Central region of DANRE ba1.

Dilution

WB~~1:1000

Format

Purified polyclonal antibody supplied in PBS with 0.09% (W/V) sodium azide. This antibody is purified through a protein A column, followed by peptide affinity purification.

Storage

Maintain refrigerated at 2-8°C for up to 2 weeks. For long term storage store at -20°C in small aliquots to prevent freeze-thaw cycles.

Precautions

(DANRE) ba1 Antibody (Center) is for research use only and not for use in diagnostic or therapeutic procedures.

(DANRE) ba1 Antibody (Center) - Protein Information

Name ba1

Function Involved in oxygen transport from gills to the various peripheral tissues.

Tissue Location

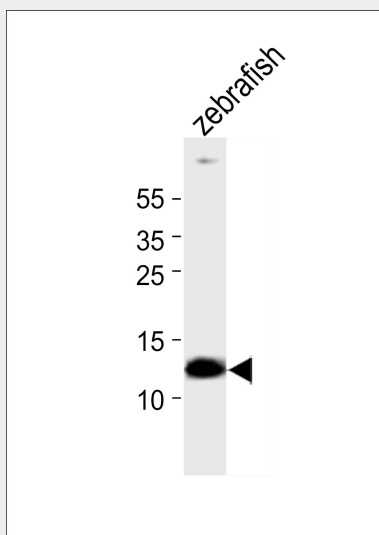
Red blood cells..

(DANRE) ba1 Antibody (Center) - Protocols

Provided below are standard protocols that you may find useful for product applications.

- [Western Blot](#)
- [Blocking Peptides](#)
- [Dot Blot](#)
- [Immunohistochemistry](#)
- [Immunofluorescence](#)
- [Immunoprecipitation](#)
- [Flow Cytometry](#)
- [Cell Culture](#)

(DANRE) ba1 Antibody (Center) - Images



Western blot analysis of lysate from zebrafish tissue, using (DANRE) ba1 Antibody (Center)(Cat. #AP20955a). AP20955a was diluted at 1:1000. A goat anti-rabbit IgG H&L(HRP) at 1:10000 dilution was used as the secondary antibody. Lysate at 5ug.

(DANRE) ba1 Antibody (Center) - Background

Involved in oxygen transport from gills to the various peripheral tissues.

(DANRE) ba1 Antibody (Center) - References

Chan F.-Y.,et al.Blood 89:688-700(1997).
Howe K.,et al.Nature 496:498-503(2013).