

PROC Antibody
Purified Rabbit Polyclonal Antibody (Pab)
Catalog # AP1017a

Specification

PROC Antibody - Product Information

Application	WB,E
Primary Accession	P04070
Reactivity	Human
Predicted	Human
Host	Rabbit
Clonality	Polyclonal
Isotype	Rabbit Ig

PROC Antibody - Additional Information

Gene ID 5624

Other Names

Vitamin K-dependent protein C, Anticoagulant protein C, Autoprothrombin IIA, Blood coagulation factor XIV, Vitamin K-dependent protein C light chain, Vitamin K-dependent protein C heavy chain, Activation peptide, PROC

Target/Specificity

KLH conjugated synthetic peptide encoding the Protein-C epitope tag (CEDQVDPRLIDGK) was used as antigen.

Dilution

WB~~1:1000

Format

Purified polyclonal antibody supplied in PBS with 0.09% (W/V) sodium azide. This antibody is prepared by Saturated Ammonium Sulfate (SAS) precipitation followed by dialysis against PBS.

Storage

Maintain refrigerated at 2-8°C for up to 2 weeks. For long term storage store at -20°C in small aliquots to prevent freeze-thaw cycles.

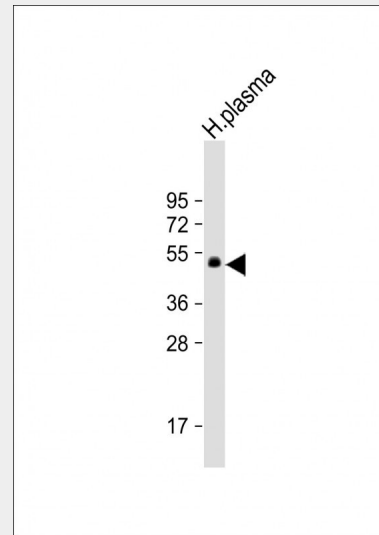
Precautions

PROC Antibody is for research use only and not for use in diagnostic or therapeutic procedures.

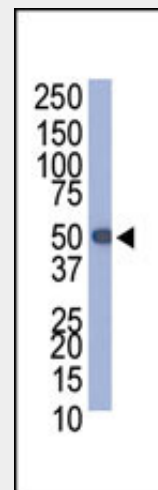
PROC Antibody - Protein Information

Name PROC

Function



Anti-PROC Antibody at 1:1000 dilution + H.plasma whole cell lysates/ proteins at 20 µg per lane. Secondary Goat Anti-Rabbit IgG, (H+L), Peroxidase conjugated at 1/10000 dilution. Predicted band size : 52 kDa
Blocking/Dilution buffer: 5% NFD/MTBST.



Western blot analysis of anti-Protein-C tag Pab (Cat. #AP1017a) in Protein-C-tagged recombinant protein bacterial lysate.

PROC Antibody - Background

Epitope tags consisting of short sequences recognized by well-characterized antibodies have been widely used in the study of protein

Protein C is a vitamin K-dependent serine protease that regulates blood coagulation by inactivating factors Va and VIIIa in the presence of calcium ions and phospholipids (PubMed:25618265). Exerts a protective effect on the endothelial cell barrier function (PubMed:25651845).

Cellular Location

Secreted. Golgi apparatus Endoplasmic reticulum

Tissue Location

Plasma; synthesized in the liver.

expression in various systems. The epitope tag composed of a 12 residue peptide, EDQVDPRLIDGK , is derived from Protein-C, a vitamin K-dependent serine protease that regulates blood coagulation by inactivating factors Va and VIIIa in the presence of calcium ions and phospholipids. Abgent's anti-Protein-C polyclonal antibody provides a simple solution to detect the expression of a Protein-C epitope-tagged protein in cells.

PROC Antibody - References

Lichty JJ, Malecki JL, Agnew HD, Michelson-Horowitz DJ, Tan S. Comparison of affinity tags for protein purification. Protein Expr Purif. 2005 May;41(1):98-105.

PROC Antibody - Protocols

Provided below are standard protocols that you may find useful for product applications.

- [Western Blot](#)
- [Blocking Peptides](#)
- [Dot Blot](#)
- [Immunohistochemistry](#)
- [Immunofluorescence](#)
- [Immunoprecipitation](#)
- [Flow Cytometry](#)
- [Cell Culture](#)