

**FLAG tag antibody (DYKDDDDK)**  
Purified Rabbit Polyclonal Antibody (Pab)  
Catalog # AP1013A**Specification****FLAG tag antibody (DYKDDDDK) - Product Information**

Application	WB,E
Reactivity	Human
Host	Rabbit
Clonality	Polyclonal
Isotype	Rabbit IgG

**FLAG tag antibody (DYKDDDDK) - Additional Information****Target/Specificity**

KLH conjugated synthetic peptide (CDYKDDDDKDYKDDDDK) was used as antigen.

**Dilution**

WB ~ 1:2000

**Format**

Purified polyclonal antibody supplied in PBS with 0.09% (W/V) sodium azide. This antibody is purified through a protein A column, followed by peptide affinity purification.

**Storage**

Maintain refrigerated at 2-8°C for up to 2 weeks. For long term storage store at -20°C in small aliquots to prevent freeze-thaw cycles.

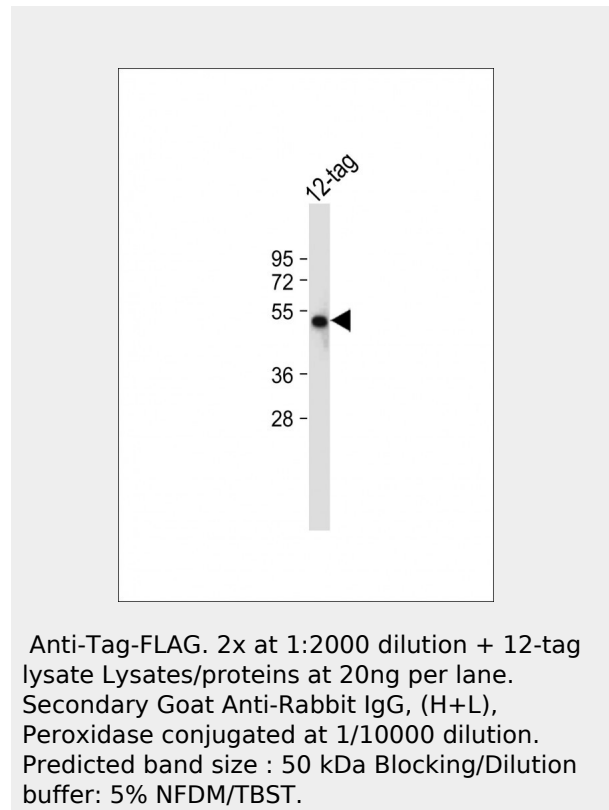
**Precautions**

FLAG tag antibody (DYKDDDDK) is for research use only and not for use in diagnostic or therapeutic procedures.

**FLAG tag antibody (DYKDDDDK) - Protein Information****FLAG tag antibody (DYKDDDDK) - Protocols**

Provided below are standard protocols that you may find useful for product applications.

- [Western Blot](#)
- [Blocking Peptides](#)
- [Dot Blot](#)
- [Immunohistochemistry](#)
- [Immunofluorescence](#)

**FLAG tag antibody (DYKDDDDK) - Background**

Epitope tags are useful for the labeling and detection of recombinant proteins using western blotting, immunoprecipitation and immunostaining techniques. The eight amino acid DYKDDDDK peptide is an established and multi-functional epitope tag and can be expressed and detected with a recombinant protein as an amino-terminal or carboxy-terminal fusion (1). Abgent's DYKDDDDK antibody binds to the same epitope recognized by Sigma's Anti-FLAG antibodies. (FLAG is a registered trademark of Sigma-Aldrich Co., which is not affiliated with Abgent).

**FLAG tag antibody (DYKDDDDK) - References**

Chubet RG, Brizzard BL. Vectors for expression and secretion of FLAG epitope-tagged proteins in mammalian cells. *Biotechniques* 1996;20(1):136-141

- [Immunoprecipitation](#)
- [Flow Cytometry](#)
- [Cell Culture](#)

#### **FLAG tag antibody (DYKDDDDK) - Citations**

- [Structure of YidC from Thermotoga maritima and its implications for YidC-mediated membrane protein insertion.](#)
- [Chromatin-remodelling factor Brg1 regulates myocardial proliferation and regeneration in zebrafish.](#)
- [Sensitive and Quantitative Three-Color Protein Imaging in Fission Yeast Using Spectrally Diverse, Recoded Fluorescent Proteins with Experimentally-Characterized In Vivo Maturation Kinetics.](#)