

**IMPA1 Antibody**  
**Purified Mouse Monoclonal Antibody (Mab)**  
**Catalog # AM8723b****Specification**

---

**IMPA1 Antibody - Product Information**

Application	WB,E
Primary Accession	<a href="#">P29218</a>
Reactivity	Human
Predicted	Human
Host	Mouse
Clonality	monoclonal
Isotype	IgG1, $\kappa$
Calculated MW	30189

**IMPA1 Antibody - Additional Information****Gene ID** 3612**Other Names**

Inositol monophosphatase 1, IMP 1, IMPase 1, 3.1.3.25, D-galactose 1-phosphate phosphatase, 3.1.3.94, Inositol-1(or 4)-monophosphatase 1, Lithium-sensitive myo-inositol monophosphatase A1, IMPA1, IMPA

**Target/Specificity**

This IMPA1 antibody is generated from a mouse immunized with a recombinant protein from the human region of human IMPA1.

**Dilution**

WB~~1:1000-1:2000

**Format**

Purified monoclonal antibody supplied in PBS with 0.09% (W/V) sodium azide. This antibody is purified through a protein G column, followed by dialysis against PBS.

**Storage**

Maintain refrigerated at 2-8°C for up to 2 weeks. For long term storage store at -20°C in small aliquots to prevent freeze-thaw cycles.

**Precautions**

IMPA1 Antibody is for research use only and not for use in diagnostic or therapeutic procedures.

**IMPA1 Antibody - Protein Information****Name** IMPA1**Synonyms** IMPA

**Function** Responsible for the provision of inositol required for synthesis of phosphatidylinositol and polyphosphoinositides and has been implicated as the pharmacological target for lithium action in brain. Has broad substrate specificity and can use myo-inositol monophosphates, myo-inositol 1,3-diphosphate, myo-inositol 1,4- diphosphate, scyllo-inositol-phosphate, D-galactose 1-phosphate, glucose-1-phosphate, glucose-6-phosphate, fructose-1-phosphate, beta-glycerophosphate, and 2'-AMP as substrates.

#### Cellular Location

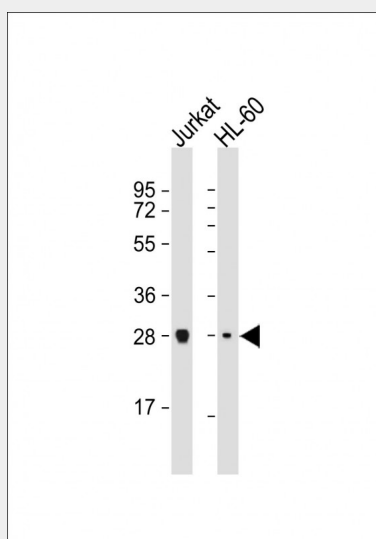
Cytoplasm.

### IMPA1 Antibody - Protocols

Provided below are standard protocols that you may find useful for product applications.

- [Western Blot](#)
- [Blocking Peptides](#)
- [Dot Blot](#)
- [Immunohistochemistry](#)
- [Immunofluorescence](#)
- [Immunoprecipitation](#)
- [Flow Cytometry](#)
- [Cell Culture](#)

### IMPA1 Antibody - Images



All lanes : Anti-IMPA1 Antibody at 1:1000-1:2000 dilution Lane 1: Jurkat whole cell lysate Lane 2: HL-60 whole cell lysate Lysates/proteins at 20 µg per lane. Secondary Goat Anti-mouse IgG, (H+L), Peroxidase conjugated at 1/10000 dilution. Predicted band size : 30 kDa Blocking/Dilution buffer: 5% NFDm/TBST.

### IMPA1 Antibody - Background

Responsible for the provision of inositol required for synthesis of phosphatidylinositol and polyphosphoinositides and has been implicated as the pharmacological target for lithium action in brain. Has broad substrate specificity and can use myo- inositol monophosphates, myo-inositol 1,3-diphosphate, myo- inositol 1,4-diphosphate, scyllo-inositol-phosphate, D-galactose 1-phosphate, glucose-1-phosphate, glucose-6-phosphate, fructose-1- phosphate, beta-glycerophosphate, and

2'-AMP as substrates.

### **IMPA1 Antibody - References**

McAllister G., et al. *Biochem. J.* 284:749-754(1992).  
Sjoeholt G., et al. *Genomics* 45:113-122(1997).  
Parthasarathy R., et al. Submitted (JAN-1998) to the EMBL/GenBank/DDBJ databases.  
Ota T., et al. *Nat. Genet.* 36:40-45(2004).  
Nusbaum C., et al. *Nature* 439:331-335(2006).